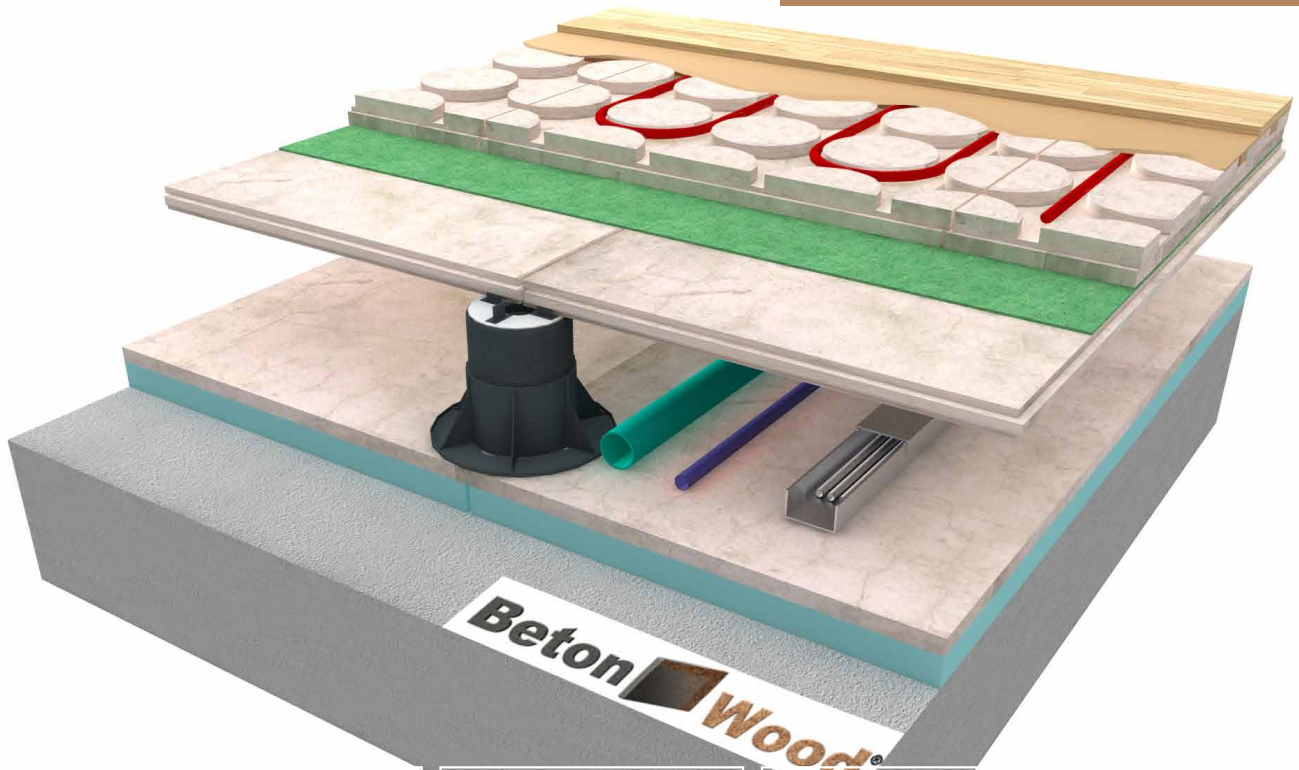


Elevated radiant floor on **betonstyr**: **betonwood+woodfiber+betonradiant**

Complete elevated radiant heating floor system with BetonWood TG, wood fiber Underfloor and Betonradiant

Complete insulating floor system with high performances



| DESCRIPTION

Elevated radiant heating floor complete system on new and existing grounds with high performances. Elevated radiant floor **betonwood**, **wood fiber**, **betonradiant** on **betonstyr** guarantees the maximum durability over time is guaranteed, with international ETA certification.

Elevated radiant heating floor based on **Betonstyr** panels and adjustable supports: **BetonWood Tongue&Groove** cement bonded particle boards with high mechanical strength and tongue&groove profile which must be arranged in a staggered way, an high density wood fiber thin mat **FiberTherm Underfloor** which increase the acoustic insulation, radiant **BetonRadiant** panels and self-leveling **Betonultraplan** to level any unevenness.

The stratigraphy consists, in order from bottom to top, of:

- **BetonStyr** XPS extruded polystyrene panels and cementbonded particle boards, with excellent compression strength and high density over the existing substrate.
- Adjustable supports **SB** with adjustable height from 25 to 270 mm;
- **BetonWood Tongue&Groove**, with the special tongue&groove profile, are suitable in elevated or floating floor systems thanks to their high compression resistance, mechanical resistance and thermo-acoustic insulation;
- **FiberTherm Underfloor** wood fiber thin mat for good impact sound insulation;
- **Beton Radiant** panels for elevated radiant heating floor system;
- **Betonultraplan** self-leveling agent to eliminate thickness differences from 1 to 10 mm.

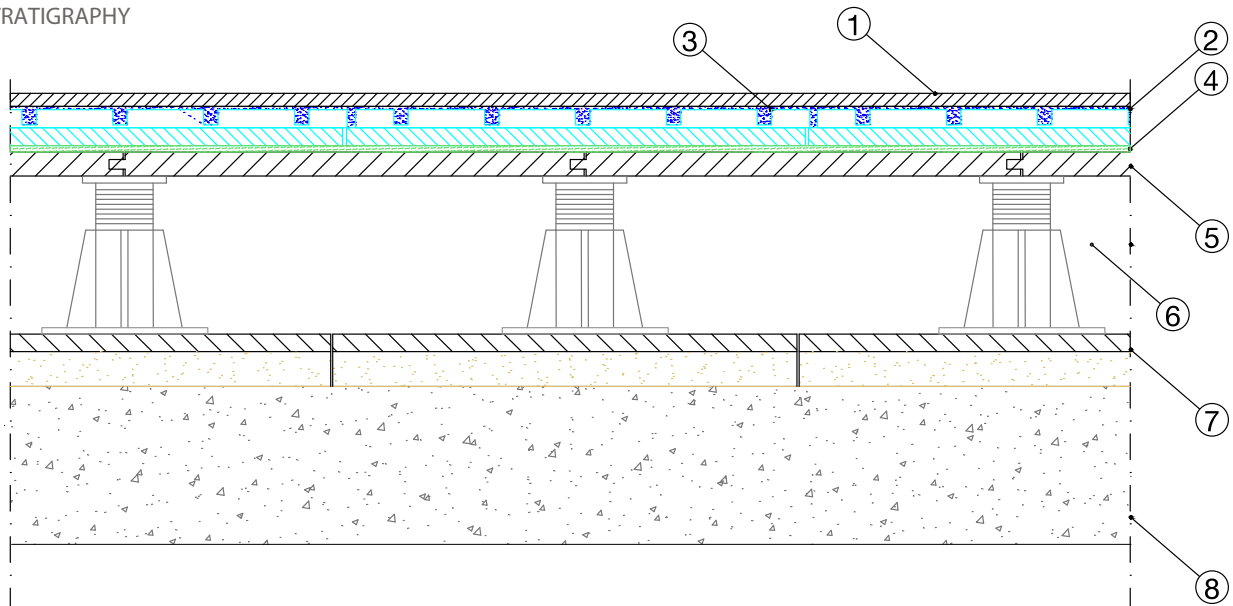
Advantages

- Excellent breathability of the screed
- Possibility to switch the water, gas and electricity systems under the floor
- Significant impact sound insulation
- Adjustable supports have the advantage of being able to be fixed to the desired height
- It creates a comfortable living climate
- The modular **BetonRadiant** system allows to obtain a radiant heating on the whole intervention surface

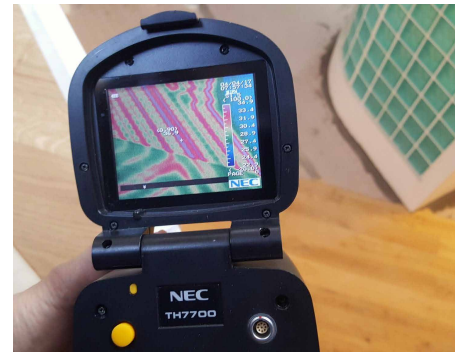
For more informations about the uses and the installation, our offices are ready to answer your questions on www.betowood.com



STRATIGRAPHY



- 1 **Floor finish surface**
- 2 **Self-leveling Beton Ultraplan** self-leveling and ultra-rapid hardening agent used in indoor environments to level and eliminate thickness differences from 1 to 10 mm of new or existing substrates, making them suitable for receiving any type of flooring in rooms where high resistance to loads and traffic is required. The consumption of BetonUltraplan is 1.6 kg/m² per mm of thickness.
- 3 **Radiant panel Betonradiant** The system is composed of two coupled cement bonded particle boards: one with thickness equal to... mm, is milled for the lodging of the heating pipes with a diameter of ... mm, while the other, with a thickness of ... mm, is the lower stiffening layer. The thermo-dynamics characteristics: high density ($\delta=1350 \text{ Kg/m}^3$), coefficient of thermal conductivity $\lambda=0.26 \text{ W / mK}$, specific heat $c=1.88 \text{ KJ / Kg K}$, coefficient of resistance to vapor penetration $\mu=22.6$ and fire reaction class A2, according to EN 13501-1.
- 4 **Wood fiber Fibertherm Underfloor** floor underlay characterized by good impact sound insulation and high improvement of environmental acoustics, excellent insulation characteristics, high resistance to pressure up to 20t/m² - important for interlocking systems. Its density is 250 kg/m³ and the declared thermal conductivity is $\lambda =0,06\pm0,1 \text{ [W/(m*K)]}$. This wood fiber panel is produced in wet process, it is recyclable and made with wood from controlled forests in according to the FSC guidelines.
- 5 **Cement bonded particle boards Betonwood TG** Every panel is made with in Portland-type concrete conglomerate and high-density debarked Pine wood fiber ($\delta = 1350\text{Kg/m}^3$) with the following thermodynamic characteristics: coefficient of thermal conductivity $\lambda= 0.26\text{W/mK}$, specific heat $c=1.88 \text{ KJ/Kg K}$, coefficient of resistance to vapor penetration $\mu=22.6$ and fire reaction class A2-fl-s1, according to EN 13501-1 standard. The panels have a special tongue & groove interlocking profile.
- 6 **Adjustable supports SB** Adjustable Floor Stands have anti-noise rubber head, specific adjustment key, variable heights, pre-cut base for wall corner cutting. Possibility to adjust the height millimetrically (adjustable from 25 to 270 mm), in favor of a perfect leveling of the flooring.
- 7 **BetonStyr xps** BetonStyr XPS rigid insulating panel, ... mm thick, made up of two layers coupled in the factory consisting of a BetonWood cement bonded particle board, high density (1350Kg / m³), made of Portland cement mix and barked pine wood fiber thickness ... mm and an insulating layer of extruded polystyrene with a thickness of ... mm.



| SYSTEM'S PRODUCTS



Betonultraplan Self-leveling, ultra-rapid self-leveling smoothing. BetonUltraplan mixed with water gives rise to a very smooth mixture, easy to work, perfectly self-leveling, with high adhesion to the substrate and very quick drying. It is applied in thicknesses up to 10 mm for each single hand, without undergoing any shrinkage, without forming cracks, until it reaches a high resistance to compression, flexion, imprint and abrasion. The completion of BetonUltraplan is 1,6 kg/m² per mm of thickness.



BetonRadiant Beton Radiant is a modular radiant heating system for the construction of radiant floors and consists of two cement bonded particle boards, high density ($\delta=1350 \text{ Kg/m}^3$) and the following thermo-dynamics characteristics: thermal conductivity coefficient $\lambda=0,26 \text{ W/mK}$, specific heat $c=1,88 \text{ KJ/Kg K}$, coefficient of resistance to vapor penetration $\mu=22,6$ and reaction to fire class A2-fl-s1, according to the standard EN 13501-1.



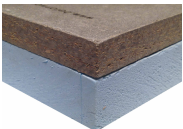
FiberTherm Underfloor The wood fiber thin mat FiberTherm Underfloor is a thermo-acoustic insulation with which you get a high improvement of acoustics for pre-finished parquet and laminate floors up to 19 dB. Its density is equal to 250 kg/m³. The material is also recyclable, with relative NaturePlus certification and made exclusively with wood from controlled forests in compliance with the FSC guidelines.



BetonWood Tongue&Groove The cement bonded particle board is made of Portland-type cement conglomerate and debarked Pine wood fiber. These panels have the following thermo-dynamics characteristics: high density (1350 Kg/m³), thermal conductivity coefficient $\lambda=0,26 \text{ W/mK}$, specific heat $c=1,88 \text{ KJ/Kg K}$, coefficient of resistance to vapor penetration $\mu=22,6$ and reaction to fire class A2-fl-s1, according to the standard EN 13501-1.



Adjustable supports SB Adjustable Floor Stands have anti-noise rubber head, specific adjustment key, variable heights, pre-cut base for wall corner cutting. Possibility to adjust the height millimetrically (adjustable from 25 to 270 mm), in favor of a perfect leveling of the flooring.



BetonStyr XPS Beton Styr XPS is an extremely versatile product as it is suitable for many building applications, because the advantages of two materials are combined in one coupled: on one side a material with a high mass and high compressive strength, the BetonWood cement bonded particle boards high density, indispensable for obtaining an adequate thermal displacement and a great noise reduction, on the other an extruded polystyrene panel characterized by lightness, high insulating capacity and easy processing.

BETONWOOD Srl

Head office :
Via Falcone e Borsellino, 58
I-50013 Campi Bisenzio (FI)

T: +39 055 8953144
F: +39 055 4640609

info@betonwood.com
www.betonwood.com

PSRBTWTGBTR - ST R.18.5

| CERTIFICATIONS

The elevated radiant heating floor system on SB supports and BetonStyr panels, BetonWood TG, wood fiber Underfloor and radiant system BetonRadiant is produced with CE certified materials in accordance with current regulations.



GENERAL SECURITY INSURANCE GUARANTEE
ON THE PRODUCT WITH CORRECT DOCUMENTED
INSTALLATION WITH PHOTOGRAPHS